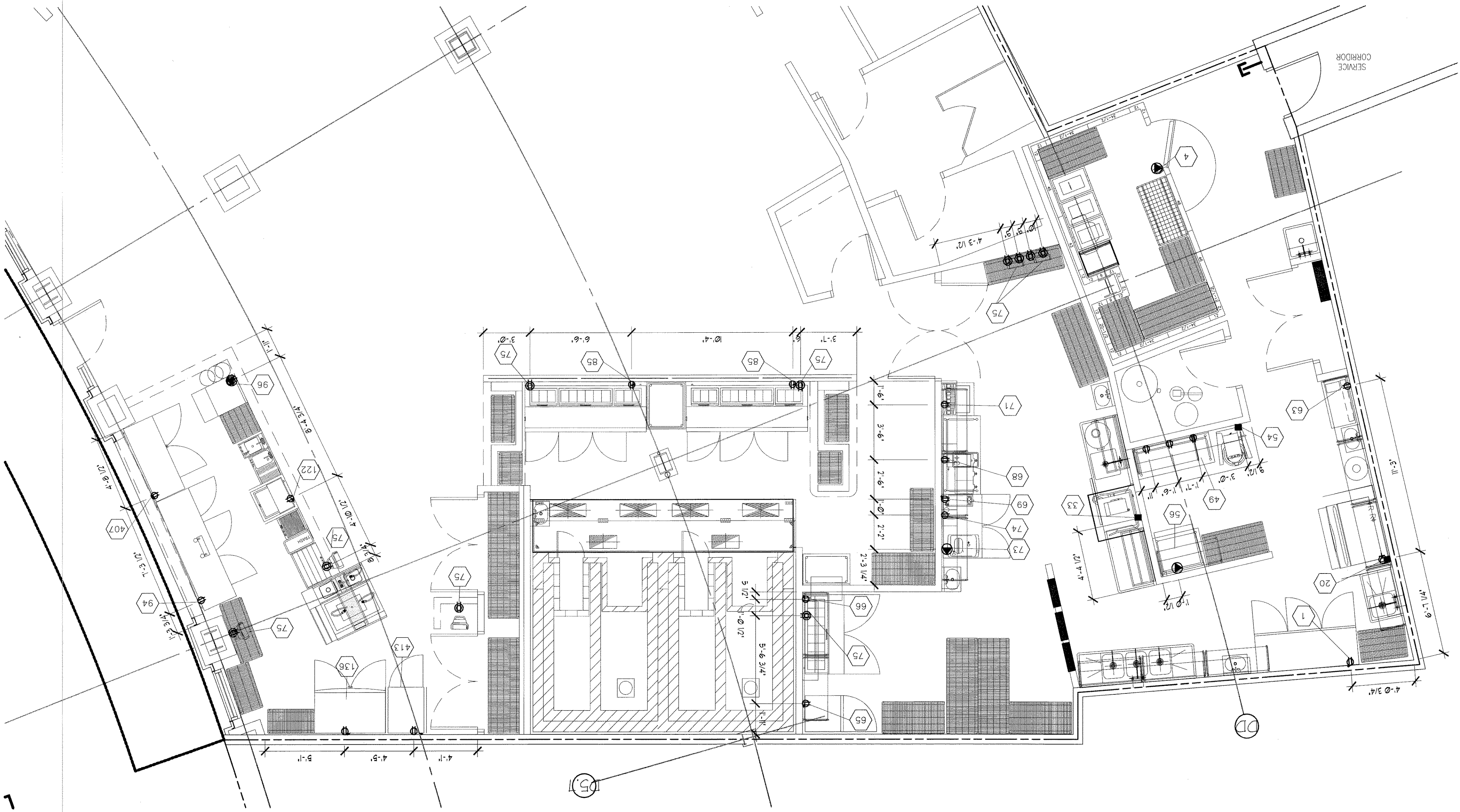


EQUIPMENT ELECTRICAL PLAN

SCALE: 1/4" = 1'-0"

1



- ELECTRICAL CONTRACTOR'S NOTES
1. THIS PLAN SHOWS ONLY THE REQUIREMENTS FOR FOOD SERVICE EQUIPMENT TO BE FURNISHED BY THE KITCHEN SUPPLIER FOR ALL OTHER REQUIREMENTS, REFER TO ARCHITECT'S PLANS, CONSULTANT OR OWNER.
 2. EQUIPMENT TO BE REUSED OR ITEMS LABELED "BY OTHERS".
 3. THE KITCHEN SUPPLIER WILL NOT BE RESPONSIBLE FOR FURNISHING ELECTRICAL APPLIANCES SUCH AS LINE OR DISCONNECT SWITCHES, SAFETY CIRCUITS, CONTROL PANELS, FUSE BOXES, FITTINGS AND INTERCONNECTING REQUIRED BETWEEN EQUIPMENT AND CONTROL PANELS. UNLESS OTHERWISE SPECIFIED, THE ELECTRICAL IS TO FURNISH ALL 200V VOLT CODES, PLUGS AND RECEPTACLES WHERE NECESSARY.
 4. ELECTRICAL CONTRACTOR IS TO SUPPLY AND INSTALL ALL CONDUIT, WIRING, BOXES, SWITCHES, FUSEBOXES, BREAKERS, ETC. TO COMPLETE INSTALLATION. ELECTRICAL CONTRACTOR SHALL MAKE ALL FINAL CONNECTIONS TO FOODSERVICE EQUIPMENT INCLUDING ALL INTERCONNECTING, BLOWER FANS, THERMS, HEATERS AND LIGHTING. REQUIRED FOR MAKE-UP COOLERS AND FREEZERS AND HIGH COMPRESSOR, BLOWER FANS, THERMS, HEATERS AND LIGHTING.
 5. BLOWERS, DAMPERS, AND FIRE SUPPRESSION SYSTEM, INCLUDING THE SUPPLY AND INSTALLATION OF A SHUT-OFF BREAKER FOR EQUIPMENT AND FAN INTERLOCK MECHANISMS AS NEEDED.
 6. ALL ELECTRICAL WORK PERFORMED IS TO BE DONE IN ACCORDANCE WITH ALL STATE AND LOCAL CODES.
 7. ALL ELECTRICAL CONDUIT IS TO BE RUN WITHIN WALL SURFACES AND SURFACE MOUNTED ELECTRICAL WORK IS NOT TO BE USED UNLESS SPECIFIED ON FOODSERVICE EQUIPMENT BROUGH-IN PLAN.
 8. EQUIPMENT TO BE SUPPLIED BY THE KITCHEN SUPPLIER WILL BE MADE AVAILABLE TO EACH CONTRACTOR UPON REQUEST.
 9. DIMENSIONS ON THIS PLAN ARE GIVEN TO THE CENTRILINES OF THE ROUGH-INS.
 10. ETC. TO FURNISH AND INSTALL DISCONNECT SWITCHES AS REQUIRED BY LOCAL CODE.

ELECTRICAL SYMBOLS

WFA	WIRING FROM ABOVE
AFI	ABOVE FINISHED FLOOR
HP	HORSEPOWER
V	VOLT
KW	KILOWATTS
TEL	TELEPHONE
SW	SWITCH
JB	JUNCTION BOX
ECS	ELECTRICAL CONDUIT STUD UP
DIR	DIRECT WIRING CONNECTION
SPO	SPECIAL PURPOSE OUTLET
C.O.	COMMUNIC. OUTLET
DGR	DEDICATED DUPLEX GROUNDED RECEPTACLE
DGR	DUPLEX GROUNDED RECEPTACLE
SOR	SINGLE GROUNDED RECEPTACLE

- GENERAL NOTES, KITCHEN SHEETS
1. REFER TO FS-2 FOR EQUIPMENT SCHEDULE AND REQUIREMENTS.
 2. ADD 3/4" PLYWOOD BACKING FROM 4'-0" TO 8'-0" AFF. IN KITCHEN AND STORAGE AREA AS SHOWN IN MATCHED AREAS SHOWN ON FS-5.
 3. EVERY WALL SHELF TO BE SECURED TO WALL WITH 3/8" X 1/2" LAG SCREWS OR 3/8" TOGGLE BOLTS AT ALL MANUFACTURERS PROVIDED HOLES TO BE SECURED TO WALL.
 4. ALL KITCHEN STORAGE AND MECHANICAL ROOM WALLS TO RECEIVE FRP TO 6" ABOVE FINISHED CEILING.
 5. ALL WALLS BETWEEN DINING/BAIR AREAS AND KITCHEN TO HAVE SOUND BATT INSULATION.
 6. ALL EXPOSED CORNERS IN KITCHEN AREA TO HAVE SANITARY CORNER GUARDS TO 5'-0" AFF.
 7. ALL DINING TABLES, PREP TABLES AND SINKS TO BE SECURED TO WALLS WITH STAINLESS STEEL FASTENERS AND THE JOINT TO THE WALL CAULKED WITH CLEAR SILICONE.

FS-4

Sheet No.

ELECTRICAL EQUIPMENT PLAN

Issue Date: 12/28/2010

Approved: Dale Garrett

Project: THE GARDENS

No. _____ Date _____ Description _____

Revisions

This document, and the ideas and designs recommended herein, are the property of Aaron M. King, and is not to be used in whole or in part for any other project, without the written authorization of Aaron M. King.

DOCUMENTS FOR:

DOWNTOWN AT THE GARDENS

GRIMALDI'S PIZZERIA

11701 LAKE VICTORIA GARDENS AVE. STE 3101

PALM BEACH GARDENS, FL

Dale Garrett

4000 N Scottsdale Road, Suite 203

Scottsdale, Arizona 85252

Phone: 405.562.3147 Fax: 405.562.7282

GRIMALDI'S

COAL BRICK-OPEN PIZZERIA

4000 N Scottsdale Road, Suite 203

Scottsdale, Arizona 85252

Phone: 405.562.3147 Fax: 405.562.7282